



Medicine Bow National Forest
Landscape Vegetation Analysis (LaVA) Project
Draft Environmental Impact Statement—July 2018



Comment Period: The Draft Environmental Impact Statement (DEIS) for the Medicine Bow LaVA Project is available for public review and comment. The comment period ends August 20, 2018.

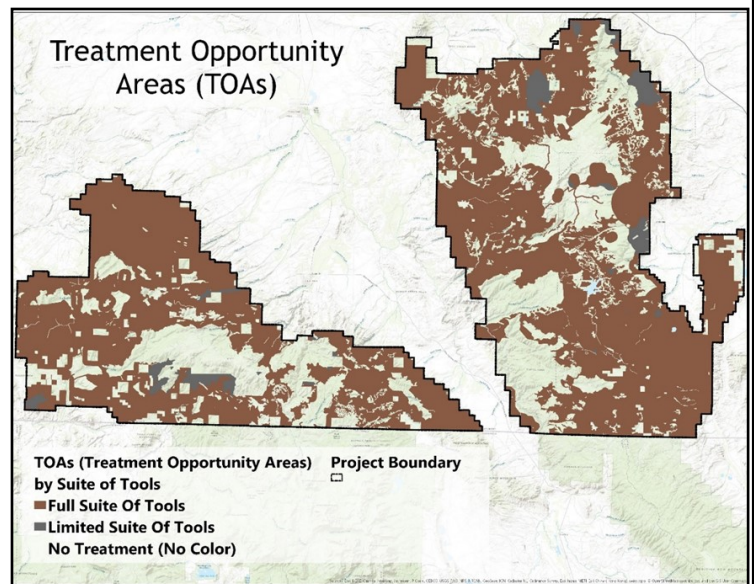
Authorization: The LaVA Project is authorized by Section 602(2) of the Healthy Forests Restoration Act (HFRA). The HFRA provides for expedited analysis to address areas affected by insect and disease infestations (e.g., a narrower range of alternatives and shortened timeframes for administrative review (objection) processes); it does not shortcut public involvement in any way.

Alternatives: The LaVA Project DEIS discloses the environmental effects of two alternatives: No Action and Modified Proposed Action.

The **No Action alternative** assumes that LaVA Project would not be implemented; current management would continue.

The **Modified Proposed Action alternative** proposes vegetation management activities to advance vegetative resiliency and health on up to 360,000 acres of National Forest System lands, including Inventoried Roadless Areas (IRAs), within the Sierra Madre and Snowy Range Mountain Ranges of the Forest. Specific actions include:

- Stand initiating or even-aged treatments on up to 95,000 acres (e.g., clearcut);
- Uneven-aged or intermediate treatments on up to 165,000 acres (e.g., selective harvest and thinning);
- Other vegetation treatments on up to 100,000 acres (e.g., prescribed fire and hand thinning)
- Up to 600 miles of temporary road construction, none in IRAs. Temporary roads would be for administrative purposes only and would generally be closed within 3 years of individual project completion.
- Treatments would be authorized for a 15-year period; treatment implementation would be completed within approximately 20 years of the project decision.
- Treatments would occur only in pre-established Treatment Opportunity Areas (TOAs) (brown and grey on map).



Specific treatment locations and methods would be determined based on mandatory field reviews, application of appropriate project guidelines, and continued collaboration with cooperating agencies and the public (See DEIS, Appendix A for more detail about project implementation).

Monitoring: Monitoring is a key component of project success to ensure compliance with regulatory requirements. Annual monitoring results would be published on the forest's project webpage.

Background Information: The LaVA Proposed Action was first presented to the public in July 2017. The Forest Service worked with cooperating agencies to modify the Proposed Action based on public comments, including: improving maps, developing trigger points for adaptive management, developing a post-decision implementation review process, removing permanent road construction proposals, and developing future public input mechanisms.

Cooperation: Strong partnerships and cooperative working relationships are necessary to advance forest residency and health at a landscape scale. As such, the Forest Service has worked with numerous cooperators, consisting of State, local, and Federal agencies, since March of 2017. Cooperators have helped the Forest Service frame the Modified Proposed Action, refine the project purpose and need, and identify values in need of protection.





LaVA DEIS Open House Materials



The following information is specific to the July 30, August 1, and August 2, 2018 Open House meetings for the LaVA DEIS. All Open House 'Station' materials will be posted on the LaVA Project website (link below) prior to the scheduled meetings; the LaVA video will be posted on the forest webpage at: <http://www.fs.usda.gov/goto/mbrtb/lava>

- **Station 1—Project Overview** presents posters depicting designated insect and disease areas in the LaVA Project area, the Purpose of and Need for the Project, Treatment Opportunity Areas, the Proposed Action, and the project timeline.
- **Station 2—Project Benefits** presents posters depicting resources that would benefit from LaVA Project implementation. Resources include, but are not limited to, timber, fire and fuels, recreation, and wildlife.
- **Station 3—LaVA Project Adaptive Implementation and Monitoring Framework** presents posters explaining how the LaVA Project would be implemented over a 15-20 year period, using the Adaptive Implementation and Monitoring Framework (DEIS, Appendix A). The Framework was developed to ensure a transparent, implementation process that encourages cooperating agency and public participation in identifying, designing, and monitoring treatments throughout the life of the LaVA Project.
- **LaVA Project Video** is an overview of the LaVA Project from the perspective of Medicine Bow National Forest Supervisor, Russ Bacon, as well as a select group of cooperating agencies.

Project Timeline

July 30, 2018	DEIS Open House—1212 S. Adams St, Laramie, WY
August 1, 2018	Open House Meeting—2416 Snyder Ave., Cheyenne, WY
August 2, 2018	Open House Meeting—101 Cypress, Saratoga, WY
July/Aug. 2018	DEIS Open House Meetings
August 20, 2018	End of 45-day DEIS Comment Period
January 2019	Final EIS and <i>Draft</i> Record of Decision (ROD) for Objection (30 days)
February 2019	Objection Resolution (30 days)
March 2019	Signed ROD and Project Implementation



More Information

The LaVA Draft Environmental Impact Statement, as well as other project information, is available on the Forest web site at www.fs.usda.gov/project/?project=51255

For more information, please contact:

- Laramie District Ranger Frank Romero, at (307) 745-2337 or feromero@fs.fed.us
- Brush Creek/Hayden District Ranger, Jason Armbruster at (307) 326-2501 or jasonmarmbruster@fs.fed.us
- Project Manager, Melissa Martin at (307) 745-2371 or mmmartin@fs.fed.us

